

# 10 CAXTON WORKS, E16 1ZA: 2,548 SQ FT / 237 SQ M

## PREMISES PLAN

### OVERVIEW

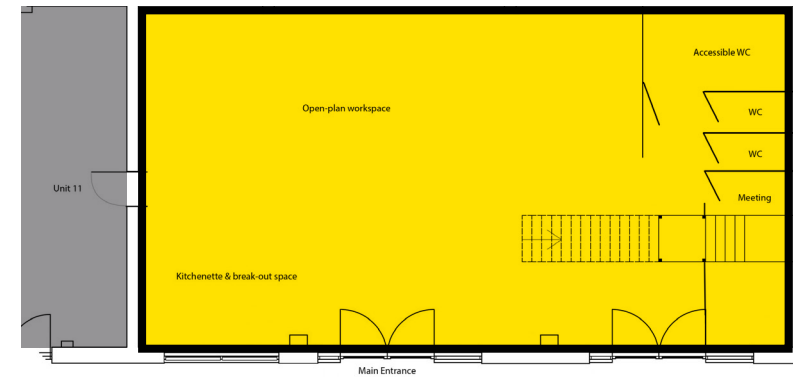
- £4,700 pcm +VAT
- 40 person capacity
- Ground & first floor
- Suitable for a range of uses including commercial services and businesses including dental and medical clinics, offices, leisure and professional services.

### WHAT'S INCLUDED IN THE OCCUPATION FEE

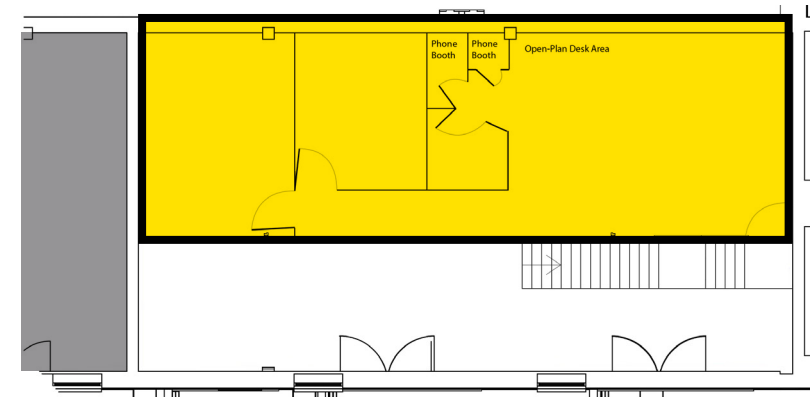
- Rent, services and buildings insurance
- Secure cycle parking
- Secure bin stores
- Flexible and simple leases

### WHAT'S NOT INCLUDED IN THE OCCUPATION FEE

- Business rates
- Office cleaning
- Utilities



GROUND FLOOR



MEZZANINE FLOOR



**CAMEL PROJECTS**  
+44 (0) 1223 350 777  
hello@camelprojects.co.uk

**CAX  
TON**